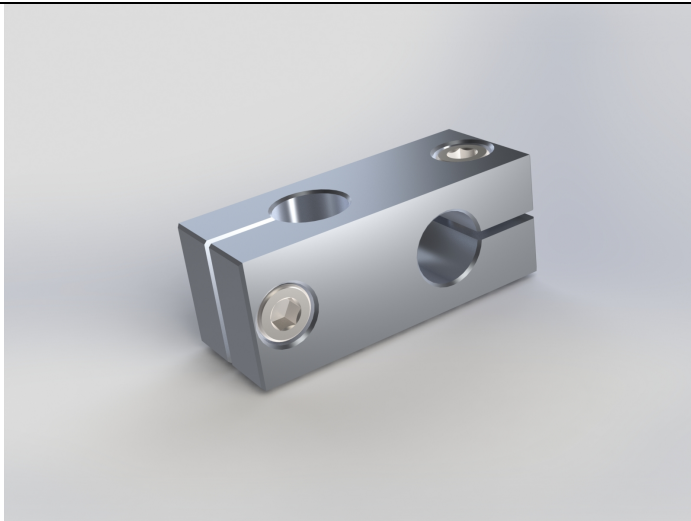


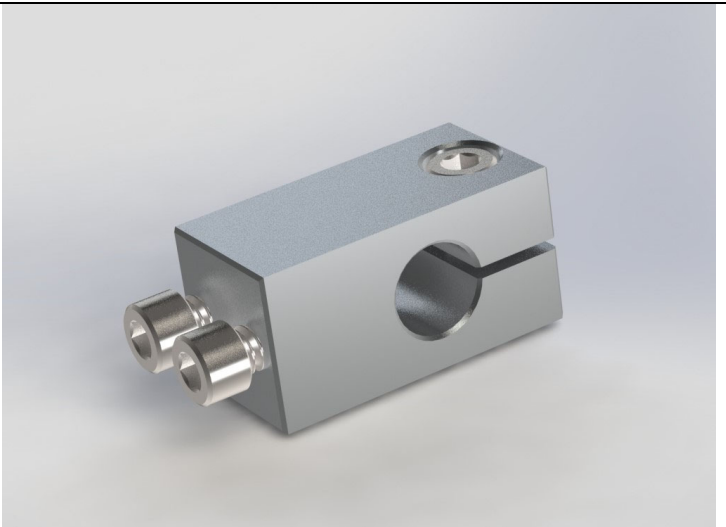


**Product Brochure: Machine Vision Mounting Brackets**  
**Rod Diameter: 1/2" Product Family**



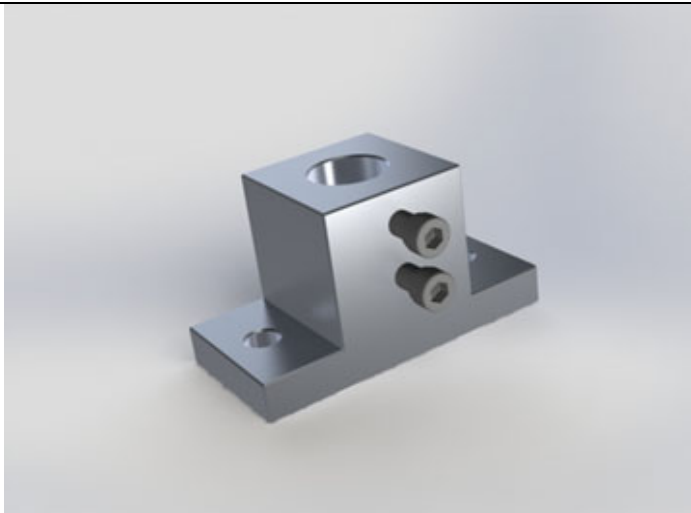
*Figure 1*

**Component Name: Knuckle  
Aluminum, for 1/2" diameter rod  
Part # 10005A**



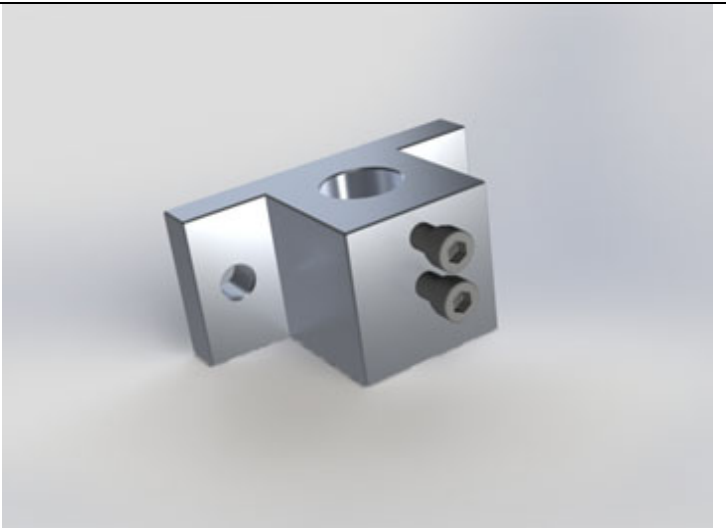
*Figure 2*

**Component Name: End Knuckle  
Aluminum, for 1/2" diameter rod  
Part # 11005A**



*Figure 3*

**Component Name: Base  
Aluminum, for 1/2" diameter rod  
Part # 20005A**

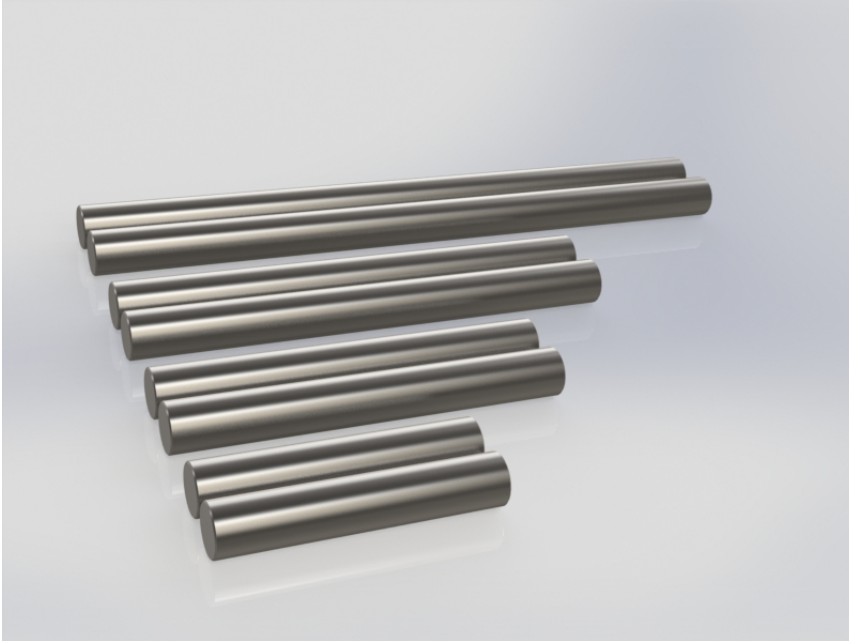


*Figure 4*

**Component Name: Right Angle Base  
Aluminum, for 1/2" diameter rod  
Part # 21005A**



***Product Brochure: Machine Vision Mounting Brackets***  
**Rod Diameter: 1/2" Product Family**



*Figure 5*

**Component Name: 1/2" Diameter Stainless Steel Rod**

**Product Code: 3000 (Rod)**

**(1/2" Diameter size code = 5)**

**(Material Code Stainless Steel = S)**

**Metric Rod Length Part # 30005SXXXMM (Replace XXX with length in mm)**

**Units of length: mm**

**Allowable lengths 50mm to 1800mm in 5 mm increments**

**Example Part Number: 30005S150MM (0.5" diameter rod 150 mm long)**

**English Rod Length Part # 30005SXX.XXIN (Replace XX.XX with length in inches)**

**Units of Length: inches**

**Allowable lengths:**

**Min Length = 2" X = 2.00"**

**Max Length = 72" X = 72.00"**

**Can be ordered in any 1/4" increment of inches in between 2.00" and 72.00"**

**Example Part Number: 30005S15.00IN (0.5" diameter rod 15.00 inches long)**

**Call for custom lengths not listed here**

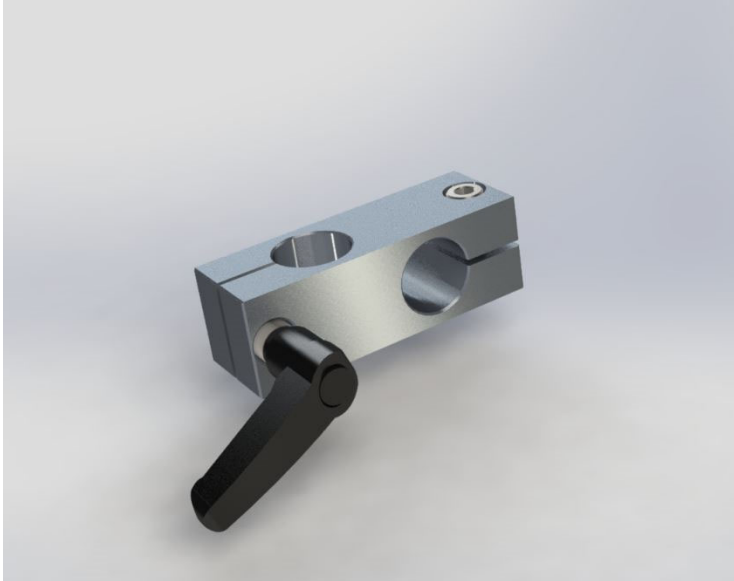
[www.serview.net](http://www.serview.net)

PH:856 719 9034

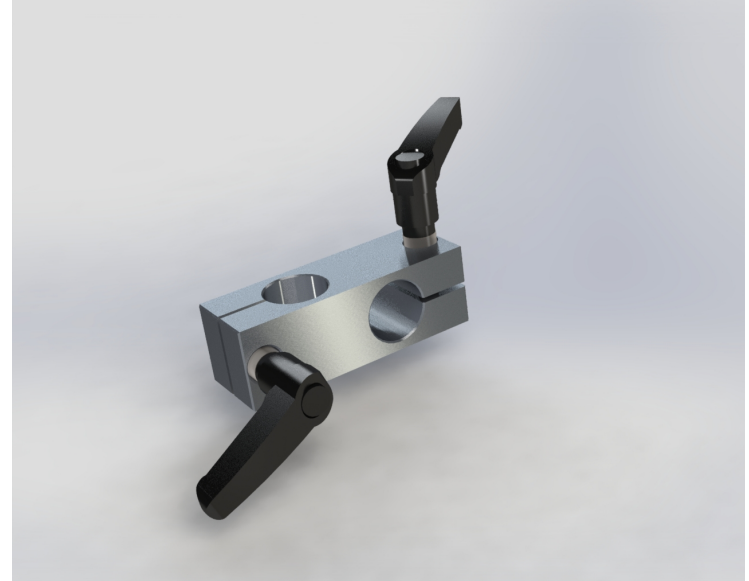
Rev 1A



**Product Brochure: Machine Vision Mounting Brackets**  
**Rod Diameter: ½" Product Family**



*Figure 6*  
**Component Name: Knuckle with Single Handle**  
**Part # 10005AH**



*Figure 7*  
**Component Name: Knuckle with Double Handle**  
**Part # 10005AHH**



*Figure 8*  
**Component Name: End Knuckle with Handle**  
**Part # 11005AH**



*Figure 9*  
**Component Name: Single Handle Kit**  
**Part # SHK-RA**