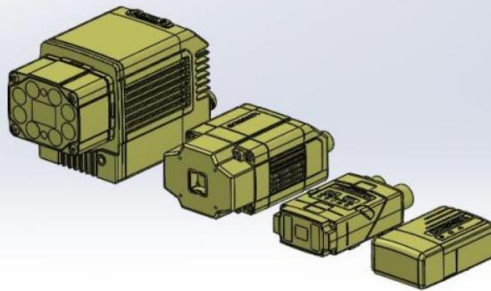




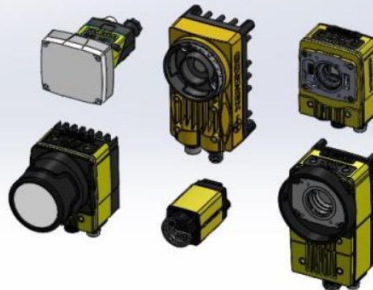
***Product Brochure: Cognex Machine Vision Mounting Brackets***

# Cognex Camera Mounts

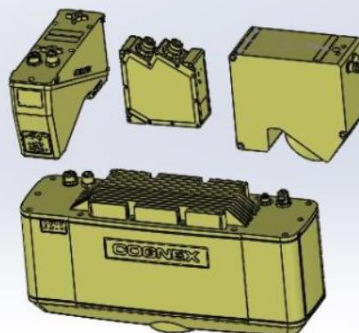
## Dataman Mounts



## In-Sight Mounts



## 3D Vision System Mounts



## Product Brochure: Cognex Machine Vision Mounting Brackets

Cognex Family: Dataman

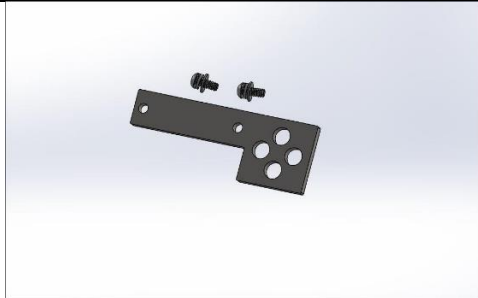


Figure 1

Part Number: 1100-DM260-RA

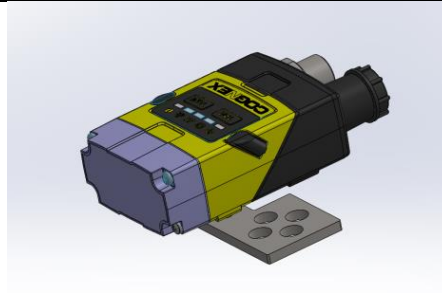


Figure 2

Typical usage scenario

**Cognex Dataman 260 Mount Kit**

Compatible with:

DMR-70 (DM70)

DMR-150

DMR-152

DMR-260

DMR-262

IS2000C

IS2000M

IS2001

IS2800

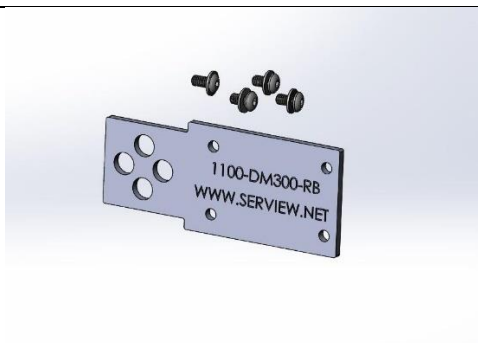


Figure 3

Part Number: 1100-DM300-RB

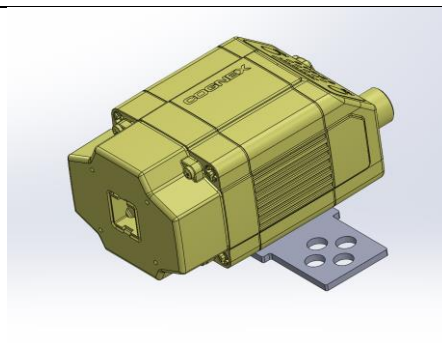


Figure 4

Typical usage scenario

**Cognex Dataman 300 Mount Kit**

Compatible with:

DM360

DM363

DM370

DM374

DM375

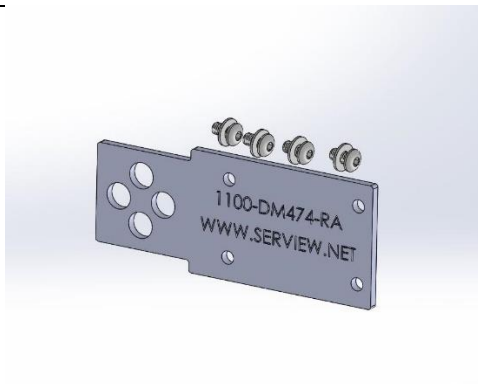
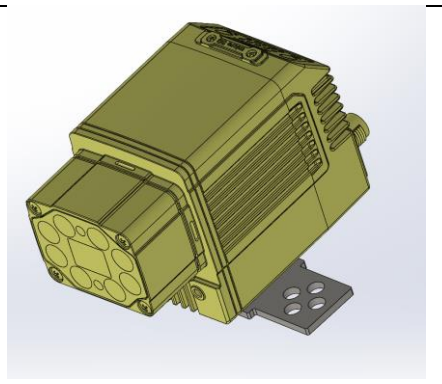


Figure 5

Part Number: 1100-DM474-RA



Typical usage scenario

**Cognex Dataman 474 Mount Kit**

Compatible with:

DM474

DM474V

All DM300 models  
including:

DM360

DM363

DM370

DM374

DM375

## Product Brochure: Cognex Machine Vision Mounting Brackets

### Cognex Family: In-Sight

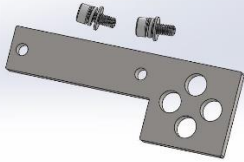


Figure 6

Part Number: 1100-IS2000-RA

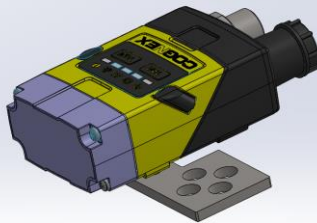


Figure 7

Typical usage scenario

**Cognex In-Sight IS 2000 Mount Kit**

Compatible with:

IS2001

IS2800

(cross reference to 1100-DM260-RA)

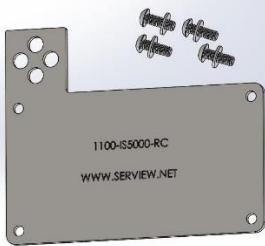


Figure 8

Part Number: 1100-IS5000-RC

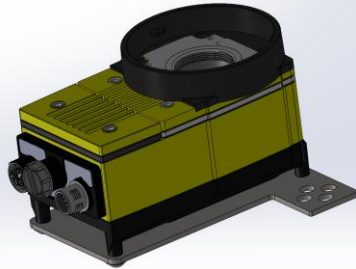


Figure 9

Typical usage scenario

**Cognex In-Sight IS 5000 Mount Kit**

Compatible with:

IS5600

IS5603

IS5604

ID5705

IS9912M

D902

D902

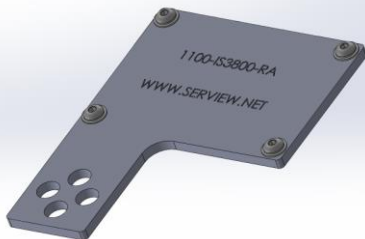


Figure 10

Part Number: 1100-IS3800-RA

(Replaces 1100-IS7K2-RC)

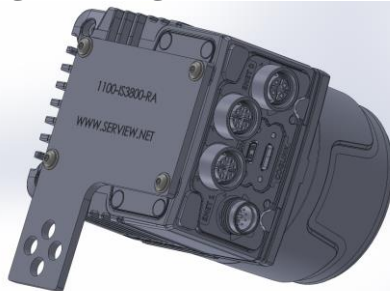


Figure 11

Typical usage scenario

**Cognex In-Sight IS 3800 Mount Kit**

Compatible with:

IS3800

IS7500, IS7501

IS7600

IS7800, IS7801

IS7802

IS7900, IS7901, IS7902

IS7905

Works with all IS7KG2 form factor cameras

**Product Brochure: Cognex Machine Vision Mounting Brackets**

Cognex Family: In-Sight Micro/8000 family

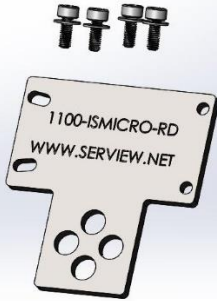


Figure 12

Part Number: 1100-ISMICRO-RD



Figure 13

Typical usage scenario

**Cognex In-Sight Micro Mount kit**

Compatible with:

IS8100, IS8101  
IS8200  
IS8400, IS8401,  
IS8402  
IS8405  
IS8500, IS8501,  
IS8502  
IS8505



Figure 14

Part Number: 1100-IS8000-RA

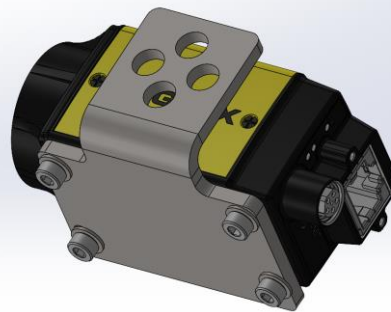


Figure 15

Typical usage scenario

**Cognex In-Sight IS-8000 Mount Kit**

Compatible with:

IS8100, IS8101  
IS8200  
IS8400, IS8401,  
IS8402  
IS8405  
IS8500, IS8501,  
IS8502  
IS8505

## Product Brochure: Cognex Machine Vision Mounting Brackets

### Cognex Family: 3D Vision Systems Mounts

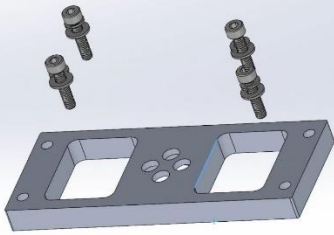


Figure 16

Part Number: 1100-IS3DL4000-RA



Figure 17

Typical usage scenario

**Cognex IS3D L4000 Mount Kit**

Compatible with:

L4050

L4100

L4300

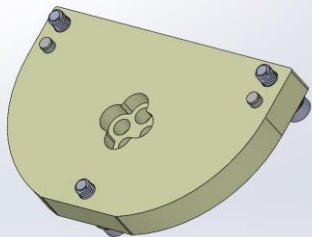


Figure 18

Part Number: 1100-3D-A5000-RA

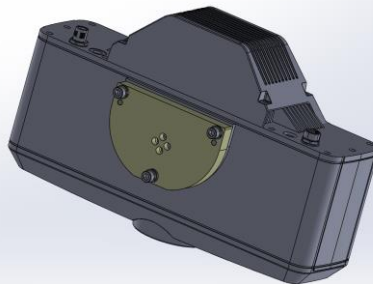


Figure 19

Typical usage scenario

**Cognex 3D-A5000 Mount Kit**

Compatible with:

3D-A5005

3D-A5030

3D-A5060

3D-A5120

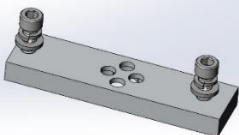


Figure 20

Part Number: 1100-DS1000-RA



Figure 21

Typical usage scenario

**Cognex DS1000 Mount Kit**

Compatible with:

DS1000

DS1050

DS1101

DS1300



***Product Brochure: Cognex Machine Vision Mounting Brackets***

**Cognex Family: 3D Vision Systems Mounts**

 <p><i>Figure 22</i></p> <p>Part Number: 30005-DS925B-RA</p>	 <p><i>Figure 23</i></p> <p>Typical usage scenario</p> <p><b>Cognex DS925B Mount kit with 1/2" Rod</b></p>	<p>Compatible with:</p> <p>DS925B</p>
 <p><i>Figure 24</i></p> <p>Part Number: 30007-DS925B-RA</p>	 <p><i>Figure 25</i></p> <p>Typical usage scenario</p> <p><b>Cognex DS925B Mount kit with 3/4" Rod</b></p>	<p>Compatible with:</p> <p>DS925B</p>
 <p><i>Figure 26</i></p> <p>Part Number: 1100-DSMAX32T-RA</p>	 <p><i>Figure 27</i></p> <p>Typical usage scenario</p> <p><b>Cognex DSMAX32T Mount Kit</b></p>	<p>Compatible with:</p> <p>DSMAX32T</p>